

The SACE qualification: your passport to university

The SACE Certificate: it's a qualification that's accepted around the globe; giving you the credentials to pursue university studies in Australia or in almost any country.

Alongside your certificate, you'll receive a Record of Achievement, and because you'll be studying the same curriculum as students in Australia, you graduate with an ATAR (Australian Tertiary Admission Rank).



The SACE teaching staff were very supportive from day one, to help me achieve my dreams and goals.



Nadzeem, SACE graduate from Malaysia, secured a spot at University of Sydney for Accounting and Finance.



My favourite thing about SACE is the variety of assessments. The balance between tests and practical evaluation keeps me engaged and equips me with the knowledge and skills I need for university.



Brian, SACE student from South Korea, aspiring to study medicine at university.



The amount of support I received studying SACE was amazing. I loved it. The teachers were always there for me, with extra resources and help with problems.



Van, SACE graduate from Vietnam won a full scholarship to Washington State University.

SACE graduates are accepted by some of the top-ranked universities in the world.

These include Oxford and Cambridge in the UK, Harvard and Stanford in the USA, and all of Australia's high-quality universities. In fact, just like the International Baccalaureate and the A-levels curriculum, SACE is embraced by universities around the world. So, wherever you would like your studies to take you, SACE is your passport to success.

Would you like to know more?

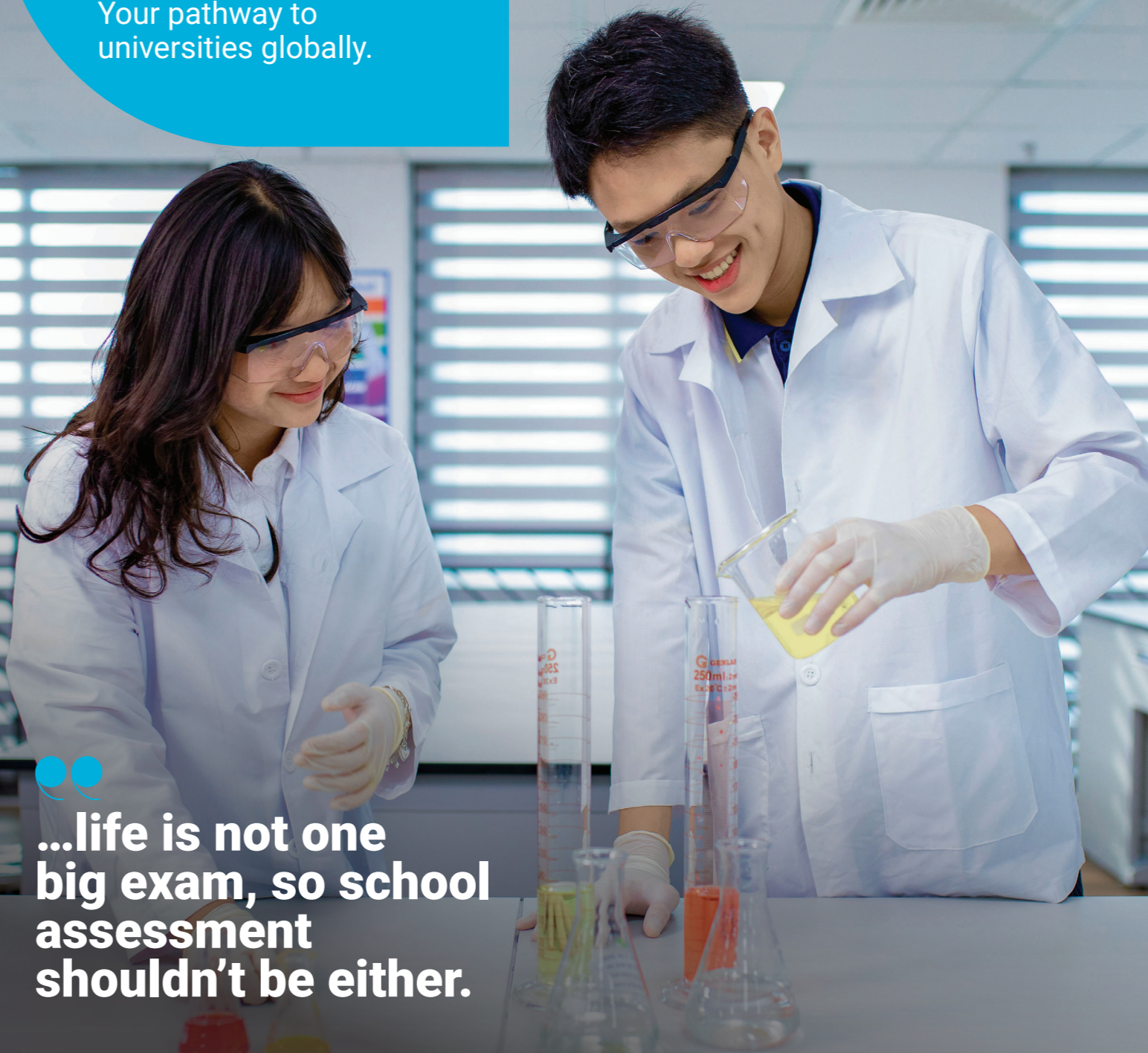


Speak with your school to find out how to join this SACE program. For more information about SACE, visit sacei.edu.au or scan this QR code.



The complete guide to SACE The South Australian Certificate of Education

Your pathway to universities globally.



...life is not one big exam, so school assessment shouldn't be either.

sacei.edu.au



SACE

An outstanding choice for high achievers

It's great to be able to choose your senior school curriculum. Understanding the differences between programs is the best way to choose a curriculum which can help you achieve your goals and ambitions. That's why we've created this guide. It's designed to clearly explain why SACE is an outstanding program and an excellent pathway to university. It should also help you understand the unique advantages of SACE and the things that make it different from other leading programs. So you can make an informed decision about this important step towards a successful future.

So, what is SACE and where was it developed?

SACE is the short name for the South Australian Certificate of Education. It's a high quality program designed for students aged 15 to 19 – the equivalent of Years 11 and 12 in Australia. SACE is the state of South Australia's official Senior Secondary Certificate of Education. It's certified by the SACE Board of South Australia, which is a government statutory authority. Most importantly, it's accepted by universities right throughout Australia and across the world. So you can be certain that SACE opens doors to an almost unlimited range of study opportunities.

An impeccable reputation and a proud history

The SACE's reputation for excellence has been built over more than 150 years. The program's heritage stretches back to 1874 and it has been taught successfully outside of Australia for more than 40 years. The SACE network of schools extends from Australia right across the Asia-Pacific, with more than 360 SACE schools in eight countries.

The numbers speak for themselves. Every year, around 17,000 new SACE graduates head out into the world, taking the next bold steps towards success in university and in life.

SACE Fast Facts



40+

Years delivered outside Australia



360+

Schools in 8 countries



60,000

Annual student enrolments



17,000

SACE graduates annually

Gain entry to universities worldwide with SACE.

There are no limits on where SACE can take you.



Successful by any measure

SACE has long been a major stepping-stone for students in Australia and the Asia-Pacific region. To date, more than 40,000 students have studied the SACE program outside of Australia and have successfully graduated.

It's reassuring to know that SACE is recognised and accepted by almost all universities worldwide, including the finest and most famous institutions. There's Harvard, Yale and all the Ivy League universities in the USA. Oxford, Cambridge and the prestigious Russell Group in the UK. Canada's U15 unis, and Asia's Top 10. As well as Australia's world-renowned Group of Eight. There really are no limits to where a SACE qualification can take you.

How SACE works

SACE is a high quality two-stage program delivered in English. It's designed for students typically aged from 15-19 years and runs over two years. As such, it's the equivalent of the Year 11 and 12 curriculum in Australian schools. It's flexible though. The program has no upper age limit, so if you've already completed some equivalent study, you may be able to complete SACE in as little as one year.



How SACE is different to other leading programs

Like other established, high quality curricula, SACE has an extremely strong academic focus, with the highest standards of excellence.

Yet it also delivers much more.

SACE equips students with the vital skills they need to gain entry to university – and for success once they get there. These skills are also critical for success in their career and in life.

They include things like critical thinking, entrepreneurship and the ability to solve problems. Not forgetting research skills, the ability to work in teams and communication skills – all absolutely vital throughout university.

The SACE way of learning and assessment supports the development of skills and makes for a happier, more positive experience for students. In addition, because SACE helps students become more resilient and adaptable, they're better able to cope and turn challenges to their own advantage.



A different, more 'real-life' kind of assessment

At SACE, we recognise that life is not one big exam, so school assessment shouldn't be either. Students who study the SACE program are regularly assessed throughout their studies. They complete smaller, more frequent assessments – a mix of coursework and exams – which help build lasting knowledge, instead of the need to cram for just a few exams at the end of the program.

This highly practical method of assessing students uses 'real-life' examples and assessment tasks which better reflect what students need to know to do well outside the classroom.

This kind of assessment is also more effective in bringing out the best in each individual student and preparing them for life beyond school.

A program to bring out the best in every student

The SACE Board sets the curriculum but it's not set in stone. Teachers have the flexibility to customise the SACE program so that it fits the preferences and ambitions of students. They can also adapt the program to meet the requirements of their school or region. Students can choose the topics they're most interested in, and they can demonstrate their learning achievements in a range of formats – not just through formal exams.

Choosing subjects to create your ideal pathway

A major advantage of the SACE program is that students can choose from a diverse range of subjects to create a program that reflects their interests, and sets up a pathway to their preferred university studies.

When the time comes to decide, you're not on your own. SACE teachers are very happy to help you choose the best combination of subjects for your planned university studies and to help support your career aspirations.

Which subjects should I choose?

To successfully complete the SACE program, you'll need to achieve 200 credits: 100 credits in Stage 1 and 100 credits in Stage 2.

Subjects have credit values of 10 or 20, depending on the time needed to complete them. A 10-credit subject requires 50-60 hours of learning, while a 20-credit subject requires 100-120 hours and typically spans a full year.

Most students will choose five subjects in Stage 1 and five subjects in Stage 2.



Although you'll have lots of flexibility, there are some compulsory requirements. You'll need to complete a mathematics subject or course in either Stage 1 or Stage 2 to meet the Numeracy Requirement. And you'll need to take an English subject or course in either Stage 1 or Stage 2 to fulfill the Literacy Requirement.

However, **if you've already completed a year of study at a similar level, there's potential for recognition of equivalent learning.** So you may not have to complete two full stages of the SACE program.



SACE helps students become more resilient and adaptability. So they're better able to cope and turn challenges to their own advantage.

Subject areas

| |
|--------------------------|
| Arts |
| Business |
| English (compulsory) |
| Health |
| Humanities |
| Languages |
| Mathematics (compulsory) |
| Technology |
| Social Sciences |



Choosing subjects: Here are some examples

Next up, we've included some popular pathway examples with their relevant subject choices. Of course, these pathways may vary according to what subjects and pathways your school offers.

Example SACE pathways

Engineering Pathway



I am interested in physics and hope to have a career in engineering.

| Stage One | | |
|-------------|-----------------------------------|------------|
| 100 credits | English as an Additional Language | 20 credits |
| | Mathematics | 20 credits |
| | Earth and Environmental Science | 20 credits |
| | Physics | 20 credits |
| | Chemistry | 20 credits |
| Stage Two | | |
| 100 credits | English as an Additional Language | 20 credits |
| | Mathematical Methods | 20 credits |
| | Specialist Mathematics | 20 credits |
| | Physics | 20 credits |
| | Chemistry | 20 credits |

Arts Pathway



I am interested in the creative industries and hope to have a career in the media.

| Stage One | | |
|-------------|-----------------------------------|------------|
| 100 credits | English as an Additional Language | 20 credits |
| | General Mathematics | 20 credits |
| | Society and Culture | 20 credits |
| | Visual Arts | 20 credits |
| | Business Innovation | 20 credits |
| Stage Two | | |
| 100 credits | English as an Additional Language | 20 credits |
| | General Mathematics | 20 credits |
| | Society and Culture | 20 credits |
| | Visual Arts | 20 credits |
| | Business Innovation | 20 credits |

Business Pathway



I am interested in accounting and hope to have a career in business.

| Stage One | | |
|-------------|-----------------------------------|------------|
| 100 credits | English as an Additional Language | 20 credits |
| | General Mathematics | 20 credits |
| | Accounting | 20 credits |
| | Economics | 20 credits |
| | Business Innovation | 20 credits |
| Stage Two | | |
| 100 credits | English as an Additional Language | 20 credits |
| | General Mathematics | 20 credits |
| | Accounting | 20 credits |
| | Economics | 20 credits |
| | Business Innovation | 20 credits |

Medicine/Health Sciences Pathway



I am interested in science and hope to have a career in health.

| Stage One | | |
|-------------|-----------------------------------|------------|
| 100 credits | English as an Additional Language | 20 credits |
| | General Mathematics | 20 credits |
| | Biology | 20 credits |
| | Psychology | 20 credits |
| | Chemistry | 20 credits |
| Stage Two | | |
| 100 credits | English as an Additional Language | 20 credits |
| | Mathematical Methods | 20 credits |
| | Biology | 20 credits |
| | Psychology | 20 credits |
| | Chemistry | 20 credits |

If you have a clear idea of what kind of university course you'd like to aim for, this can guide your subject selection. However, if you're unsure which path you'd like to take, your teachers can help you choose subjects which keep your options open and still provide you with an excellent pathway to further study.

How your work is assessed

So what might your experience be like once you're well into the SACE program?

The SACE assessment is different to other senior school programs because it includes a school assessment component.

In Stage 1, students' work is fully assessed by their school. Then in Stage 2, their work is 70% assessed by their school and 30% by the SACE Board.

Our aim here is to assess students based on evidence of their learning and knowledge. This evidence can be collected through a variety of assessments, such as tests, essays, and oral presentations, all aligned with the SACE Subject Outline.

SACE also pioneered the use of e-exams, providing more authentic and relevant assessment, and recognising that students use technology in their learning and everyday lives.

Teachers, guided by performance standards, grade assignments on a scale from A to E, with a moderation process ensuring the grading is consistent, particularly for compulsory subjects like English and mathematics.

The grading structure changes once you begin Stage 2. From here, 70% of the final grade is determined



by school-based assessments marked by teachers according to the SACE Subject Outline and then moderated.

The remaining 30% is based on external assessment, which is developed and marked by the SACE Board.

This approach reduces stress for students as, by the time they face exams or external assessments, they've already completed and received grades for a large part (70%) of the SACE.

